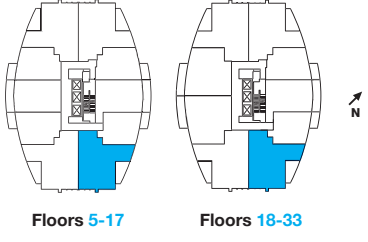




Residence 13
2 Bedroom + Den

Suite Area: 968 sq.ft.
Balcony Area: 99 sq.ft.
Total Area: 1,067 sq.ft.



All areas and stated room dimensions are approximate. Sizes and specifications are subject to change without notice. Actual living area and balcony/terraces may vary from floor stated areas. E.&O.E.

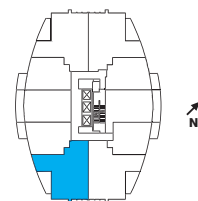
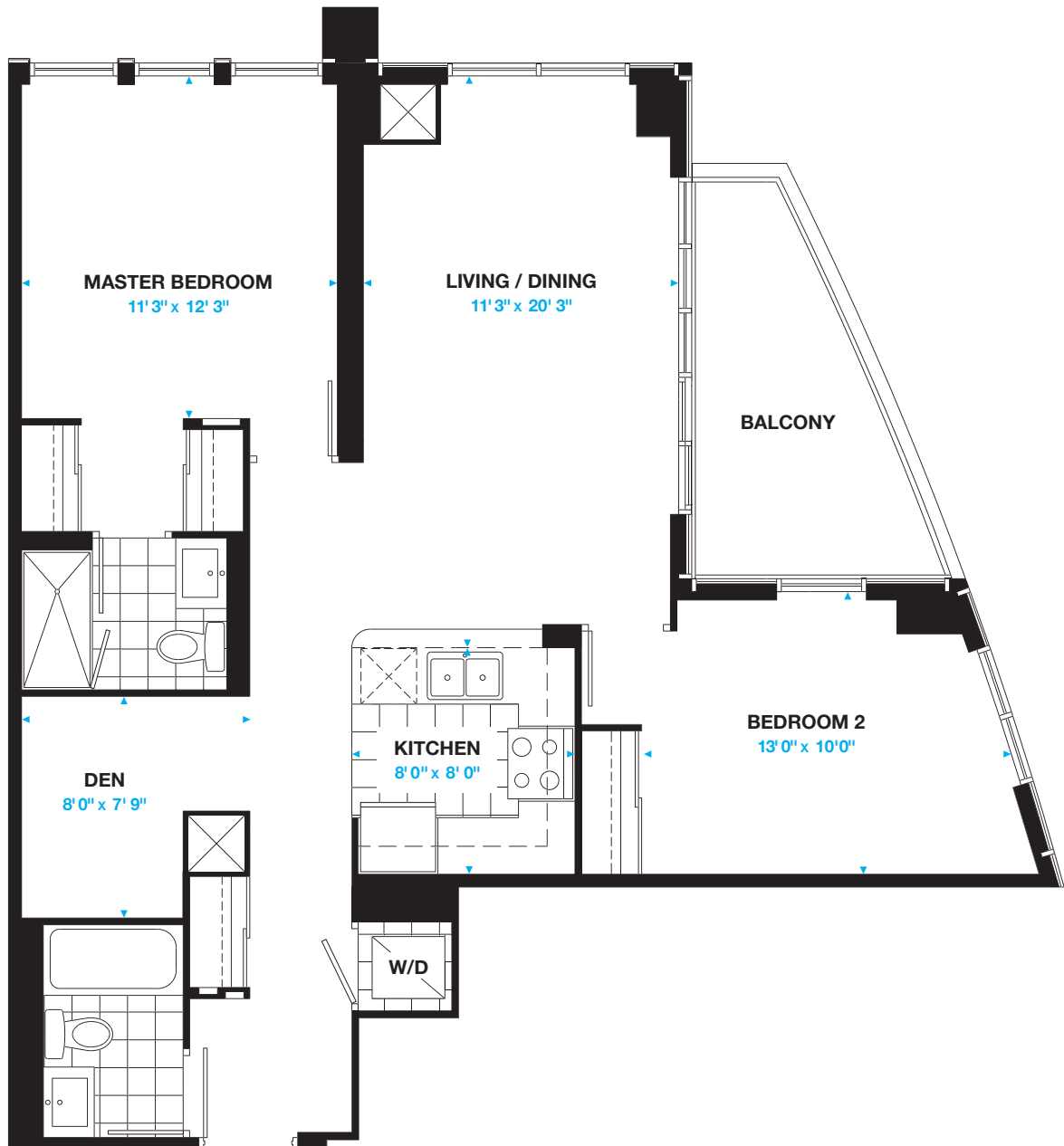
PERLA

Residence 14 2 Bedroom + Den

Suite Area: 967 sq.ft.

Balcony Area: 99 sq.ft.

Total Area: 1,066 sq.ft.



Floors 5-17



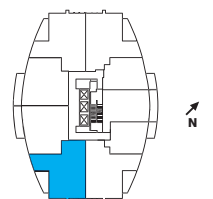
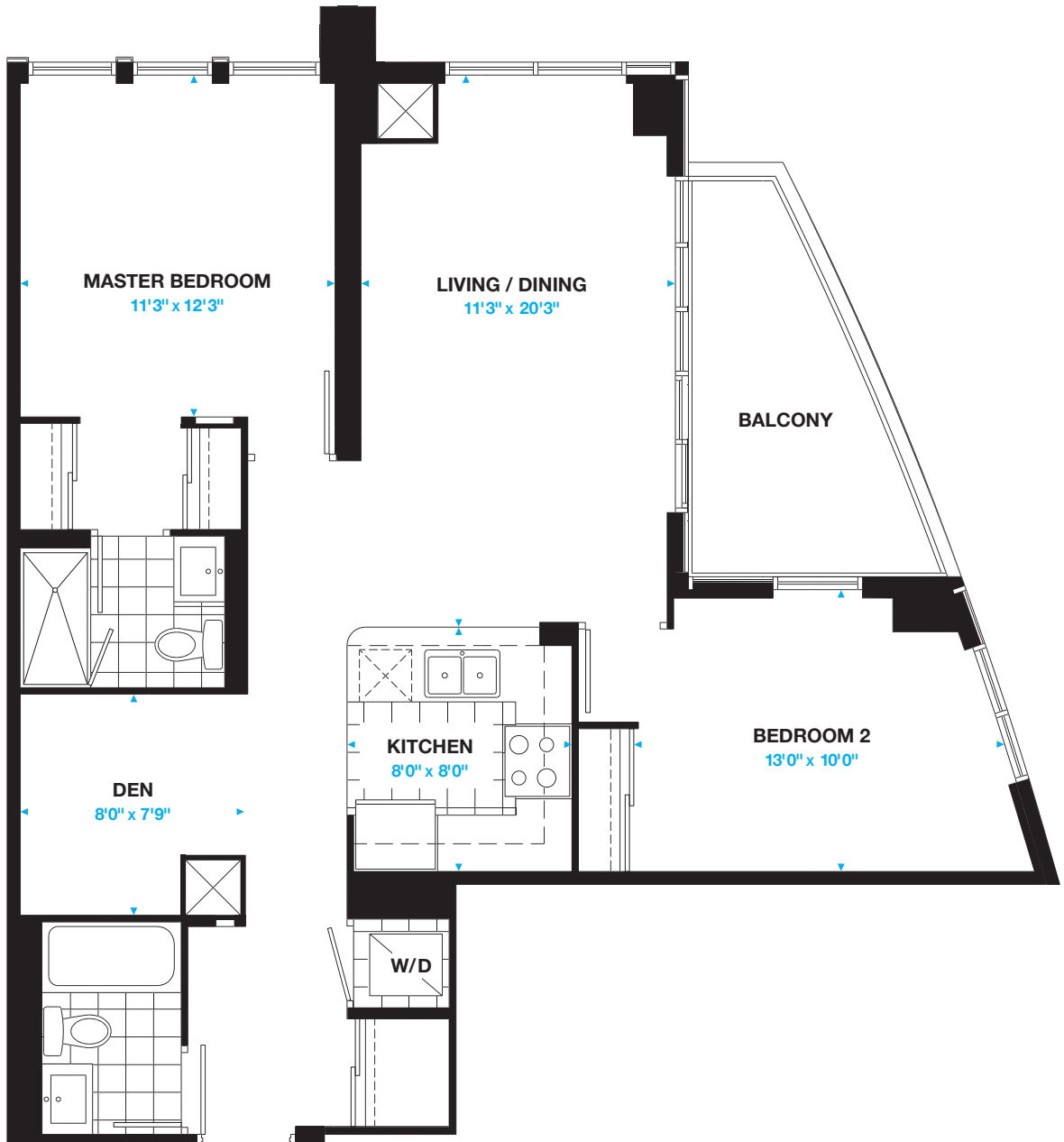


Residence 14
2 Bedroom + Den

Suite Area: 983 sq.ft.

Balcony Area: 99 sq.ft.

Total Area: 1,082 sq.ft.



Floors 18-33





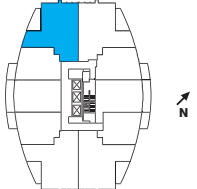
Residence 18

2 Bedroom + Den

Suite Area: 968 sq.ft.

Balcony Area: 99 sq.ft.

Total Area: 1,067 sq.ft.



Floors 5-17





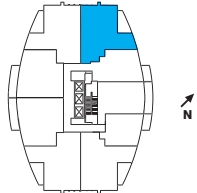
Residence 18

2 Bedroom + Den

Suite Area: 960 sq.ft.

Balcony Area: 99 sq.ft.

Total Area: 1,059 sq.ft.



Floors 18-33





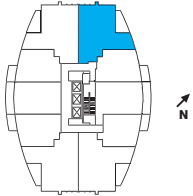
Residence 19

2 Bedroom + Den

Suite Area: 960 sq.ft.

Balcony Area: 99 sq.ft.

Total Area: 1,059 sq.ft.



Floors 5-17



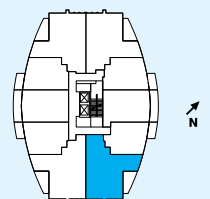
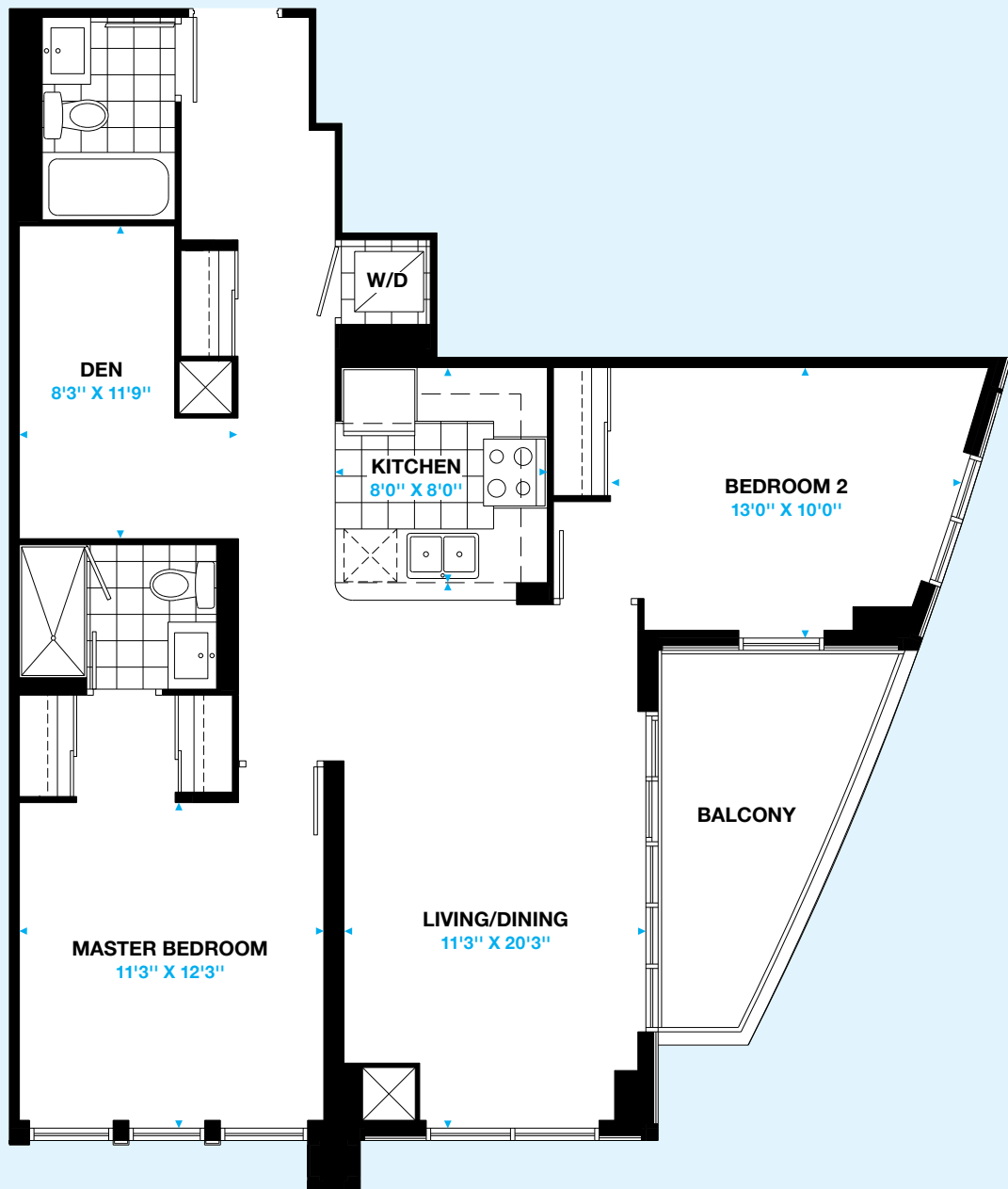


Residence 03
2 Bedroom + Den

Suite Area: 1,010 sq.ft.

Balcony Area: 99 sq.ft.

Total Area: 1,109 sq.ft.



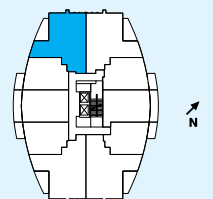
Floors 5-15





Residence 08
2 Bedroom + Den

Suite Area: 974 sq.ft.
Balcony Area: 99 sq.ft.
Total Area: 1,073 sq.ft.



Floors 5-15



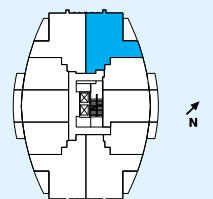


Residence 09
2 Bedroom + Den

Suite Area: 967 sq.ft.

Balcony Area: 99 sq.ft.

Total Area: 1,066 sq.ft.



Floors 5-15

